



A Platten
Plates
Piastr
Plošče
Desky

B Führungselemente
Guide elements
Elementi di guida
Vodilni elementi
Vodící díly

C Präzisionsteile
Precision elements
Elementi di precisione
Precizni elementi
Přesné díly

D Temperierelemente
Elements for heating
and cooling
Elementi di raffreddamento
Hladilni elementi
Díly pro temperaci a chlazení

E Federelemente
Springs & elastomers
Molle ed elastomeri
Vzmeti in elastomeri
Pružiny a elastomery

F Zubehör
Accessories
Accessori
Pripomočki
Příslušenství

G Info

E

ZUBEHÖR / ACCESSORIES / ACCESSORI PRIPOMOČKI / PŘÍSLUŠENSTVÍ

3400

ISO 8734 DIN 6325

34-25



Zylinderstifte
Dowel pins
Spine cilindrice
Cilindriční zatiči
Válcové kolíky

Mat.: WS

3456

VDI 3366

34-29



Tragschrauben
Lifter studs
Perni di sollevamento
Dvižni vijaki
Zdvihací čepy

3401

ISO 8735 DIN 7979 EN 28735

34-26



Zylinderstifte mit Innengewinde
Dowel pins with internal extracting thread
Spine cilindrice con foro filettato
Cilindriční zatiči z notranjim navojem
Válcové kolíky s vnitřním závitem

Mat.: WS

3457

34-29



Tragzapfen
Lifter studs
Perni di sollevamento
Dvižni vijaki
Zdvihací čepy

3440

34-27



Schulter - Passschrauben
Ground shoulder screws
Viti con gambo rettificato
Vijaki z brušenim stebлом
Šrouby s broušeným osazením

3460

ISO 4762 DIN 912

34-30



Zylinderschrauben mit Innensechskant
Cylinder head cap screws
Viti testa cilindrica con esagono incassato
Imbus vijaki
Imbusové šrouby

3445

34-27



Feder-, Pass - und Distanzeinheiten
Socket shoulder screws
Viti a colletto rettificato con esagono incassato
Prilagodni in distančni elementi
Rozpínací trubky se šroubem

3461

DIN 7984

34-31



Zylinderschrauben mit Innensechskant und niedrigem Kopf
Cylinder low head cap screws
Viti testa cilindrica bassa con esagono incassato
Imbus vijaki z nizko glavo
Imbusové šrouby s nízkou hlavou

3450

34-28



Federnde Drückstücke mit Kugel
Spring plungers
Grani a sfera
Kroglični zapahi
Pružinové šrouby s kuličkou

3462

ISO 10642 DIN 7991

34-31



Senkschrauben mit Innensechskant
Countersunk head cap screws
Viti testa conica con esagono incassato
Imbus vijaki z vgreznjeno glavo
Šrouby se zápustnou hlavou a vnitřním šestihranem

3455

DIN 580

34-28



Ringschrauben
Lifting eyebolts
Golfari maschi
Ušesni vijaki
Závěsná oka

3463

ISO 4028

34-32



Gewindestift mit Zapfen
Locking screws with engaged surface
Grani punta cilindrica
Navojni zatiči z nastavkom
Zajišťovací šrouby s čepem

E

**ZUBEHÖR / ACCESSORIES / ACCESSORI
PRIPOMOČKI / PŘÍSLUŠENSTVÍ**

3464

ISO 4626

34-32



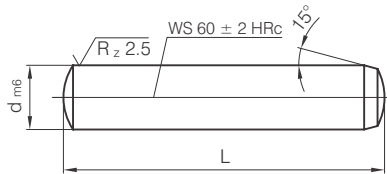
Gewindestift
Locking screws
Grani punta piatta
Navojni zatiči
Zajišťovací šrouby

3470

34-33



Präzisionslehrenbänder
Precision feeler gages
Nastri calibrati di precisione
Precizni podložni trakovi
Planžety



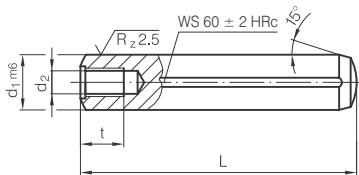
Mat.: WS



 **3400 - d x L**


d	L	d	L	d	L
1,5	6	5	16	10	50
	8		20		60
	10		24		70
	12		32		80
	16		40		100
2	10		50	12	120
	12	6	60		32
	16		12		40
	20		16		50
2,5	10		6	18	14
	12	20		70	
	16	24		80	
	20	32		100	
	24	40		120	
3	10	8	50	16	40
	12		60		50
	16		70		60
	20		80		80
	24		20		100
	32		24		120
4	10	10	32	20	50
	12		40		60
	16		50		80
	20		60		100
	24		70		120
	32		80		60
	40		100		80
50	24	100			
5	10	10	32	20	120
	12		40		140





Mat.: WS



 **3401 - d₁ x L**

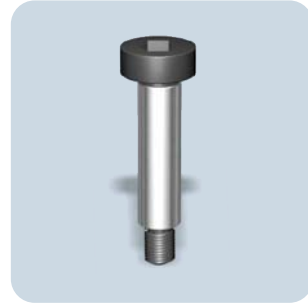
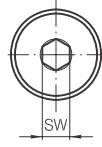
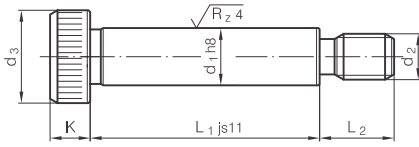
d ₂	t	d ₁	L
M4	6	6	20
			24
			32
			40
			50
			60
M5	8	8	20
			24
			32
			40
			50
			60
M6	10	10	24
			32
			40
			50
			60
			80
			100
			12
		32	
		40	

d ₂	t	d ₁	L
M6	10	12	50
			60
			80
			100
			120
			120
M8	12	14	40
			50
			60
		16	80
			100
			120
M10	16	20	50
			60
			80
			100
			120
			120



3440

KERN PART SERVER 20 30



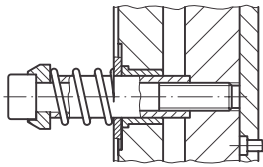
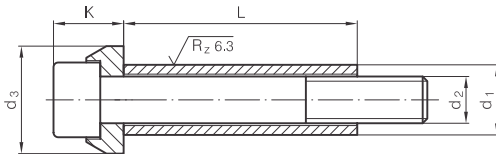
3440 - d₁ x L₁

d ₂	d ₃	L ₂	K	SW	d ₁	L ₁
M5 x 0,8	10	9,5	4,5	3	6	16
						20
						25
						30
						40
M6 x 1	13	11	5,5	4	8	16
						20
						25
						30
						40
M8 x 1,25	16	13	7	5	10	16
						20
						25
						30
						40

d ₂	d ₃	L ₂	K	SW	d ₁	L ₁
M10 x 1,5	18	16	8	6	12	20
						25
						30
						40
						50
						60
M12 x 1,75	24	18	11	8	16	30
						40
						50
						60
						80
M16 x 2	30	22	14	10	20	40
						50
						60
						80
						100

3445

KERN PART SERVER 20 30



3445 - d₁ x L



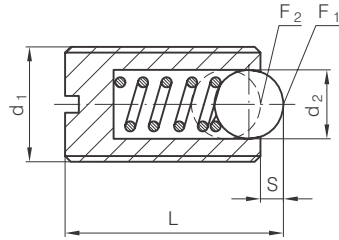
d ₂	d ₃	K	d ₁	L
M6	15	10	10	20
				30
				40
				50
				60
M8	19	13	12,5	30
				40
				50
				60
				70
M10	23	15	15	30
				40
				50
				60
				70

d ₂	d ₃	K	d ₁	L
M10	23	15	15	80
				100
M12	27	18	17,5	40
				50
				60
				70
				80
				100
M16	34	24	23	50
				60
				70
				80
				100



3450

KERN PART SERVER 20 30



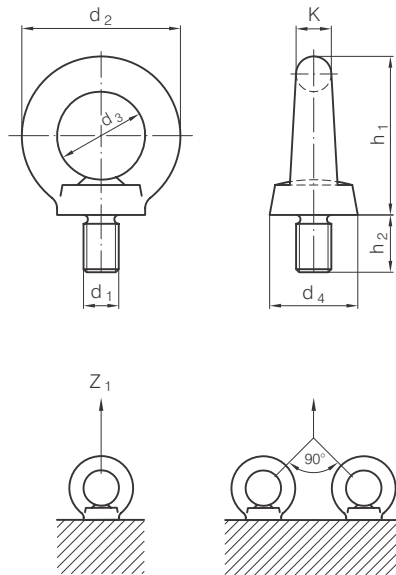
3450 - d₁

L	S	d ₂	F ₁ (N)	F ₂ (N)	d ₁
9	0,8	2,5	6	12	M4
12	0,9	3	7	13	M5
14	1	3,5	9	15	M6
16	1,5	5	20	35	M8
19	2	6	25	45	M10
22	2,5	8	35	60	M12
24	3,5	10	65	110	M16

3455

DIN 580

KERN PART SERVER 20 30

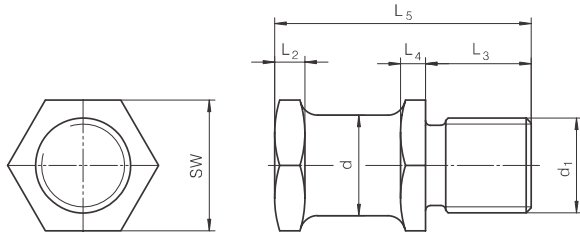


3455 - d₁

d ₂	d ₃	d ₄	h ₁	h ₂	K	Z _{1max}	Z _{2max}	d ₁
36	20	20	36	15	8	140	95	M 8
45	25	25	44,5	18	10	230	170	M 10
54	30	30	53	22	12	340	240	M 12
63	35	35	63,5	26	14	700	500	M 16
76	42	48	76	30	17	1200	830	M 20
90	50	56	90	35	20	1800	1270	M 24
106	56	65	107	45	24	3600	2600	M 30

3456

VDI 3366

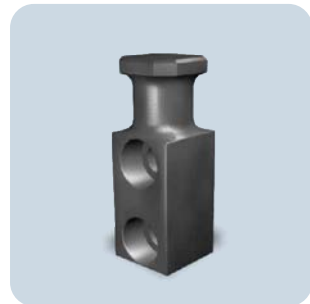
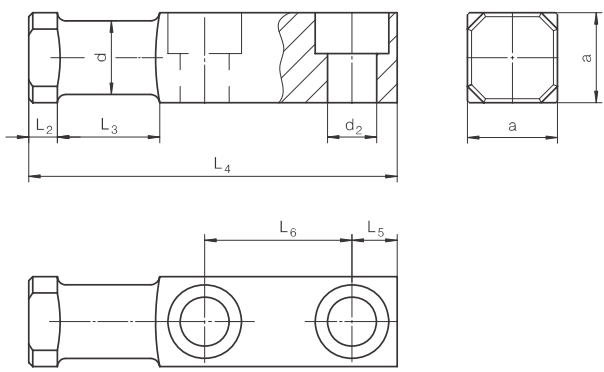


3456 - d₁

d	Z ₁ (N)	SW	L ₂	L ₃	L ₄	L ₅	d ₁
16	4000	27	6	22	6	50	M16
20	5000	32	8	25	7	60	M20
25	6300	36	10	32	8	75	M24
32	10000	41	12	40	10	94	M30
40	16000	50	12	50	10	112	M36

3457

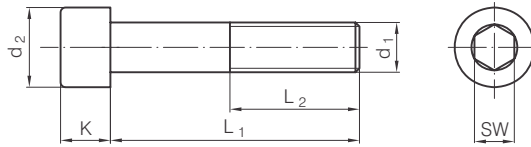
VDI 3366



3457 - d

a	Z ₁ (N)		d ₂	L ₂	L ₃	L ₄	L ₅	L ₆	d
20	3200	M8	9	6	20	80	10	34	16
25	6300	M10	11	8	25	90	10	37	20
35	12500	M12	14	8	30	100	12	38	25
40	20000	M16	18	10	32	120	16	46	32
50	32000	M20	22	10	40	140	18	54	40
60	50000	M24	26	12	45	160	22	59	50





3460 - d₁ x L₁

d ₂	K	SW	L ₂	d ₁	L ₁					
7	4	3	6,4	M4	8					
			8,4		10					
			10,4		12					
			14,4		16					
			18,4		20					
			20		25					
			20		30					
8,5	5	4	8	M5	10					
			10		12					
			14		16					
			18		20					
			22		25					
			22		30					
			22		35					
10	6	5	7,5	M6	10					
			9,5		12					
			13,5		16					
			17,5		20					
			24		25	30	24	M6	30	
									35	
									40	
									45	
									50	
									55	
									60	
			18		90	100	18	M6	110	
									120	
									13	8
13	16									
17	20									
22	25									
28	30	35		28						
			45							
			50							
			55							
			60							
			70							
			80							
			90							
			100							
			110							
			120							
			130							
			140							
			150							

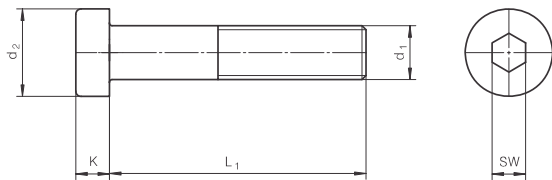
d ₂	K	SW	L ₂	d ₁	L ₁					
13	8	6	28	M8	160					
			12,5		16					
			16,5		20					
			21,5		25					
			26,5		30					
			26,5		35					
16	10	8	32	M10	40					
					45					
					50					
					55					
					60					
					70					
					80					
			24		16	14	44	M16	90	
									100	
									110	
									120	
									130	
									140	
									150	
18	12	10	36	M12	160					
					170					
					180					
					190					
					200					
					210					
					220					
					24	16	14	44	M16	240
										250
										260
										270
										280
										290
										300
24	16	14	44	M16	30					
					35					
					40					
					45					
					50					
					55					
					60					
			73		30	35	73	M24	70	
									75	
									80	
									85	
									90	
									95	
									100	

d ₂	K	SW	L ₂	d ₁	L ₁									
24	16	14	44	M16	90									
					100									
					110									
					120									
					130									
					140									
					150									
			57		200	220	57	M16	240					
									260					
									30	20	17	44	M20	50
														60
														70
														80
														90
100														
110														
52	120	130	52	M20	120									
					130									
					140									
					150									
					160									
					180									
					200									
65	220	240	65	M20	260									
					280									
					300									
					320									
					36	24	19	60	M24	50				
										60				
										70				
80														
90														
100														
110														
73	30	35	73	M24				120						
								130						
								140						
								150						
								160						
								180						
								200						



3461

DIN 7984



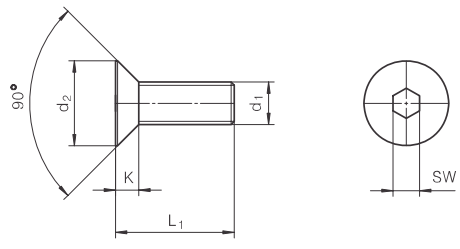
3461 - d₁ x L₁

d ₂	K	SW	d ₁	L ₁
7	2,8	2,5	M4	8
				10
				12
				16
				20
				25
8,5	3,5	3	M5	8
				10
				12
				16
				20
				25
10	4	4	M6	10
				12
				16

d ₂	K	SW	d ₁	L ₁
10	4	4	M6	20
				25
				30
				35
				40
				45
13	5	5	M8	12
				16
				20
				25
				30
				35
16	6	6	M10	40
				45
				50
				60

3462

ISO 10642 DIN 7991



3462 - d₁ x L₁

d ₂	K	SW	d ₁	L ₁
8	2,3	2,5	M4	8
				10
				12
				16
				20
				25
10	2,8	3	M5	10
				12
				16
				20
				25
				30
12	3,3	4	M6	10
				12
				16
				20

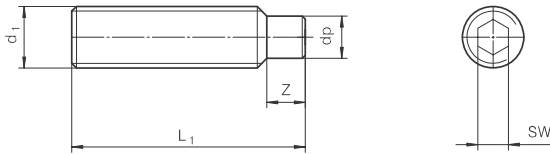
d ₂	K	SW	d ₁	L ₁
12	3,3	4	M6	16
				20
				25
				30
				35
				40
16	4,4	5	M8	10
				12
				16
				20
				25
				30
20	5,5	6	M10	35
				40
				45
				50



3463

ISO 4028

KERN PART SERVER 20 30



3463 - $d_1 \times L_1$

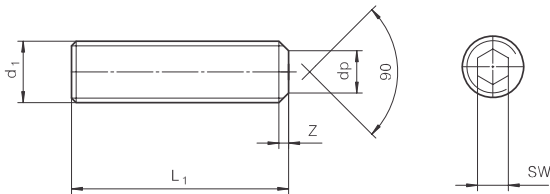
Z	dp	SW	d_1	L_1
2	2,5	2	M4	10
				12
				16
3	4	3	M6	20
				25
				16
4	5,5	4	M8	20
				25
				30
5	7	5	M10	20

Z	dp	SW	d_1	L_1
5	7	5	M10	30
				40
				50
6	8,5	6	M12	30
				40
				50
8	12	8	M16	40
				50
				60

3464

ISO 4626

KERN PART SERVER 20 30



3464 - $d_1 \times L_1$

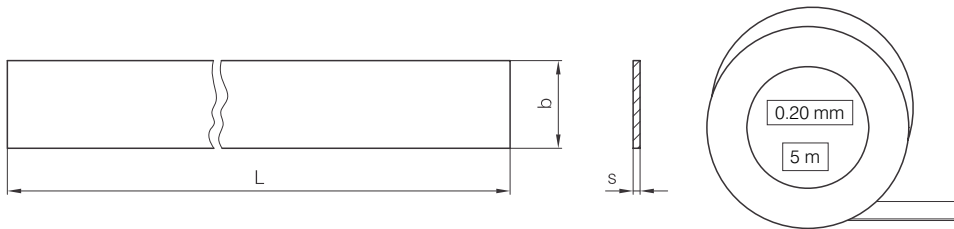
SW	z	dp	d_1	L_1
2	0,75	2	M4	6
				8
				10
				12
				12
2,5	0,75	3,5	M5	6
				8
				10
				12
				16
				20
				20
3	1	4	M6	8
				10
				12
				16
				20
				25
4	1,25	5,5	M8	8
				10
				12
				16
				20
				25
				30
				30
				35
				35

SW	z	dp	d_1	L_1
4	1,25	5,5	M8	40
				10
				12
				16
				16
5	1,5	7	M10	20
				25
				30
				35
				40
				45
				50
6	1,75	8,5	M12	12
				16
				20
				25
				30
				35
				40
				45
				50
				60
8	2	12	M16	20
				30
				30
				40



3470

KERN 20
PART SERVER 30



Werkstoff / Materials / Materiali / Materiali:

- K - W-Nr. 1.1274
- R - W-Nr. 1.4301 (0,005 - 0,075 mm)
1.4310 (0,10 - 2,00 mm)
- Ms - W-Nr. 2.0321 (CuZn 37)



3470 - bx L x s - Mat.

Mat. - Werkstoff / Material / Materiale / Material
pcs - stücke / pieces / pezzi / kosi

		b x L													
		b=12,7				b=25	b=50	b=100	b=150	50x300	100x500	150x500			
s	tol.	L=1m	L=2m	L=5m		L=10m	L=5m	L=5m	L=5m	L=5m	10 pcs	5 pcs	5 pcs		
0,005	0,001		R	R		K									
0,01	0,002	K	K	K	R	K	R	R			K				
0,02	0,002	K	K	K	R	K	R	R	R		K	R			
0,025	0,002									R	Ms		R	Ms	
0,03	0,002	K	K	K	R	K	K	K			K				
0,04	0,003	K	K	K	R	K	K	K			K				
0,05	0,003	K	K	K	R	K	K	K	R	R	Ms	K	R	R	Ms
0,06	0,003	K	K	K		K	K	K			K				
0,07	0,004	K	K	K		K	K	K			K				
0,075	0,004									R	Ms		R	Ms	
0,08	0,004	K	K	K		K	K	K			K				
0,09	0,004	K	K	K		K	K	K			K				
0,1	0,004	K	K	K	R	K	K	K	R	R	Ms	K	R	R	Ms
0,12	0,004	K		K		K		K			K				
0,15	0,005	K	K	K	R	K	K	K	R	R	Ms	K	R	R	Ms
0,18	0,005	K				K		K			K				
0,2	0,006	K	K	K	R	K	K	K	R	R	Ms	K	R	R	Ms
0,25	0,007	K	K	K	R	K		K		R	Ms	K		R	Ms
0,3	0,007	K	K	K	R	K	K	K	R	R	Ms	K	R	R	Ms
0,35	0,008	K	K	K		K		K			K				
0,4	0,009	K	K	K	R	K	K	K	R	R	Ms	K	R	R	Ms
0,45	0,009	K		K		K		K							
0,5	0,01	K	K	K	R	K	K	K	R	R	Ms	K	R	R	
0,6	0,01	K	K	K		K	K	K	R			K	R		
0,7	0,012	K	K	K		K	K	K	R			K	R		
0,8	0,013	K	K	K		K	K	K	R			K	R		
0,9	0,013		K	K		K	K	K	R				R		
1	0,013	K		K		K	K	K	R			K	R	R	
1,1-1,5													R		
1,6-2,0	0,025												R		

Mat. - Werkstoff / Material / Materiale / Material
 F - Format / Format / Formato / Format
 U - Einheit / Unit / Unita / Enota
 T - Dicke / Thickness / Spessore / Debelina

pcs/dim - Stücke/dimension
 Pieces/dimension
 Pezzi/dimensione
 Kosi/dimenzija

Sort. A	Sort. N	Sort. R	Sort. M
Sort. B	Sort. P		
Sort. C	Sort. Q		

	Mat.	F	U	T
Sort. A	K	50 x 300 mm	1 pcs/dim	0,01 - 1,00 mm
Sort. B	K	50 x 300 mm	1 pcs/dim	0,03 - 1,00 mm
Sort. C	K	50 x 300 mm	1 pcs/dim	0,02 / 0,03 / 0,05 / 0,10 / 0,15 / 0,20 / 0,25 / 0,30 / 0,40 / 0,50 / 1,00 mm
Sort. M	Ms	150 x 500 mm	1 pcs/dim	0,025 - 0,50 mm
Sort. N	R	100 x 500 mm	1 pcs/dim	0,02 - 0,5 + 1,00 mm
Sort. P	R	100 x 500 mm	1 pcs/dim	1,50 + 2,00 mm
Sort. Q	R	100 x 500 mm	1 pcs/dim	0,60 - 0,90 mm
Sort. R	R	150 x 500 mm	1 pcs/dim	0,025 - 0,50 mm



